

20Ft. Gullwing Pop-up (2) 4x3 Kits

Full display systems are offered in a wide choice of configurations from basic tabletop kits to full 20' long displays. All systems are offered as curved or straight systems, single or double sided and offer the option of combining with either breath taking seamless graphic mural panels or versatile "Velcro friendly" fabric panels. (Magnetic booths include a graphic mural that replace the fabric panels)

Standard production time line for these products (1-5 Ct.) is 4-6 days.

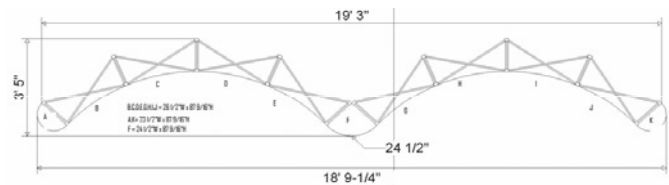
Standard production time line for detachable graphics for fabric display (50-100 sq. ft.) is 2-4 days.

Booth Structure Specs:

Frame Color: Purple

Standard Fabric Color: Blue

- Standard 4x3 Kit:** (2) 4X3 frame
(36) channel bars,
(8) front curved fabric panels
(2) end cap fabric panels
(1) ghost fabric panel
(2) OCP case



Structure Overall Size: 231"W x 41"D x 92.5" H

Shipping Size: 39"W x 26"D x 16" H OCP Case

Shipping Weight: 160 lbs.

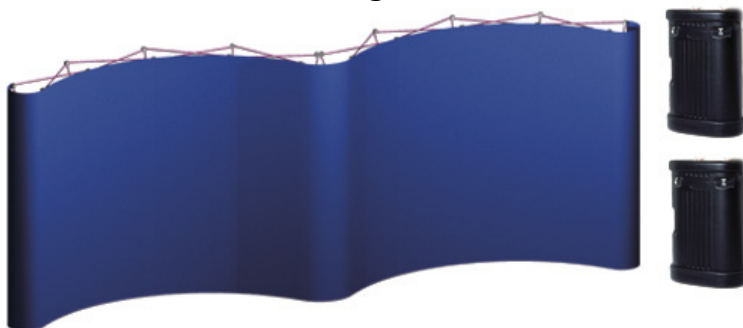
Case: Black OCP

- Panel Specs:** *Front Curved Panel:* 26.5"wide x 87.5625"high
Rear Curved Panel: 31.75"wide x 87.5625"high
Straight Panel: 28.8125"wide x 87.5625"high
End Cap Panel: 23.5"wide x 87.5625"high

Graphic Type: Pos-Pro/Polycarb combo with hook velcro

- Graphic Sizes:** (8) *Front Curved Panel:* 26.5"wide x 87.5625"high
or (8) *Rear Curved Panel:* 31.75"wide x 87.5625"high
or (8) *Straight Panel:* 28.8125"wide x 87.5625"high
+ (2) *End Cap Panel:* 23.5"wide x 87.5625"high
+ (1) *Ghost Panel:* 24.5"wide x 87.5625"high

Gullwing Kit



Gullwing Graphics Kit

