

# Linear Tabletop Display Kits



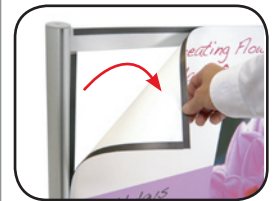
## Features & Benefits

- Low profile design conserves booth space.
- Sturdy aluminum frame construction and steel foot provide stability.
- Your choice of standard table top colors compliments your booth decor.
- Built to accommodate add on accessories so you can diversify your display.
- Standardized kits allow for quick shipping.
- Installation tool included.

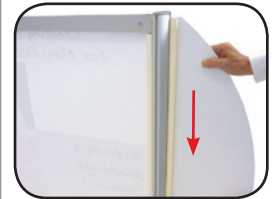


Tabletop Frame

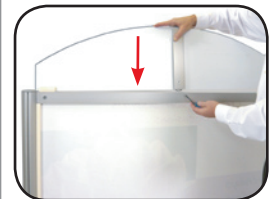
## Graphic Attachment



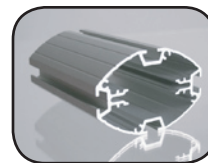
Magnetic Graphics



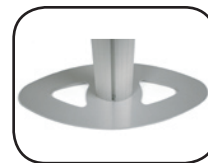
Wing Graphics



Graphic Header



75mm Oval Extrusion



Oval Steel Base

## Hardware Specifications

Color: Silver

Weight of Unit: 30 lbs.

Footprint of Unit: 74" w x 16" d without lights

Height of Display: 55" without lights

## Graphic Dimensions

Please use available templates when setting up artwork.

### Center Graphic

Total size w/bleed: 47" w x 43" h  
Trim size: 46" w x 42" h

### Left and Right Wings

Total size w/bleed: 13" w x 43" h  
Trim size: 12" w x 42" h

### Header

Total size w/bleed: 46" w x 12" h  
Trim size: 45" w x 11" h

## Additional Info

Shipping Size: 50" x 28" x 12"

Shipping Weight: 55 lbs.

Case: Molded OCH Case

# Assembly Instructions

## Linear Tabletop Parts Include:



(2) Oval Steel Bases



(2) Clear PVC Washers



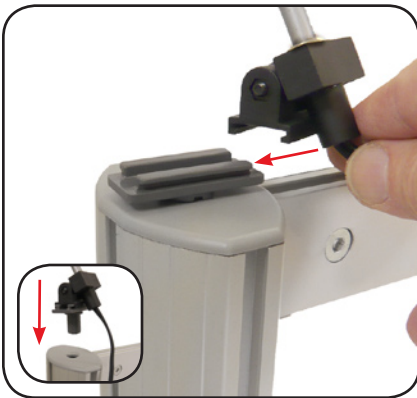
(1) Allen Key Set



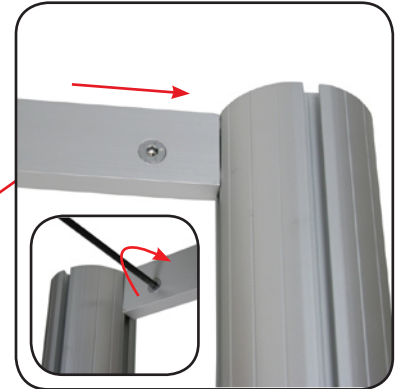
(2) Vertical Extrusions



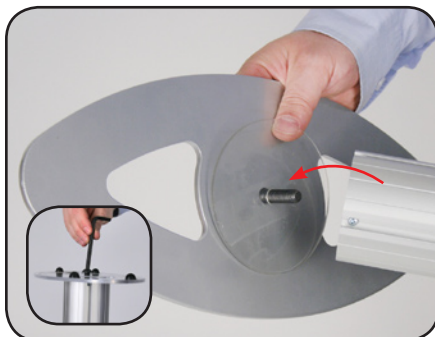
(2) Horizontal Extrusions/Graphic Rails



Optional lights can be added to the display.



Attach top and bottom horizontal extrusions to the vertical uprights using the installed lock and the supplied hex key.



Base units are shipped attached. If the base becomes loose during the life of the product, use the hex key to tighten the bolt on the underside of the unit.



Attach top and bottom horizontal extrusions to the vertical uprights using the installed lock and the supplied hex key.